

FOR SUBLEASE
±103,014 SF

15780 El Prado Road
Chino, CA



Property Features:

- ▶ Free Standing Building with Fenced Yard
- ▶ ±10,000 SF Executive Office Space
- ▶ ±4,000 SF Assembly/Flex Space
- ▶ 31' Clear Height
- ▶ .60/3000 Fire Sprinklers
- ▶ Ten (10) Dock High Doors (Expandable - 11 Knockouts)
- ▶ Ground Level Loading
- ▶ 1,600 Amps, Power Distributed
- ▶ Close Proximity to the 71 and 60 Freeways



The information contained herein has been obtained from sources we deem reliable. While we have no reason to doubt its accuracy, we do not guarantee it. The prospective buyer or lessee should independently verify all information contained herein. All measurements are approximate.

Ashwill
Associates
COMMERCIAL REAL ESTATE

21660 E Copley Drive
Suite 195
Diamond Bar, CA 91765
www.ashwill.com

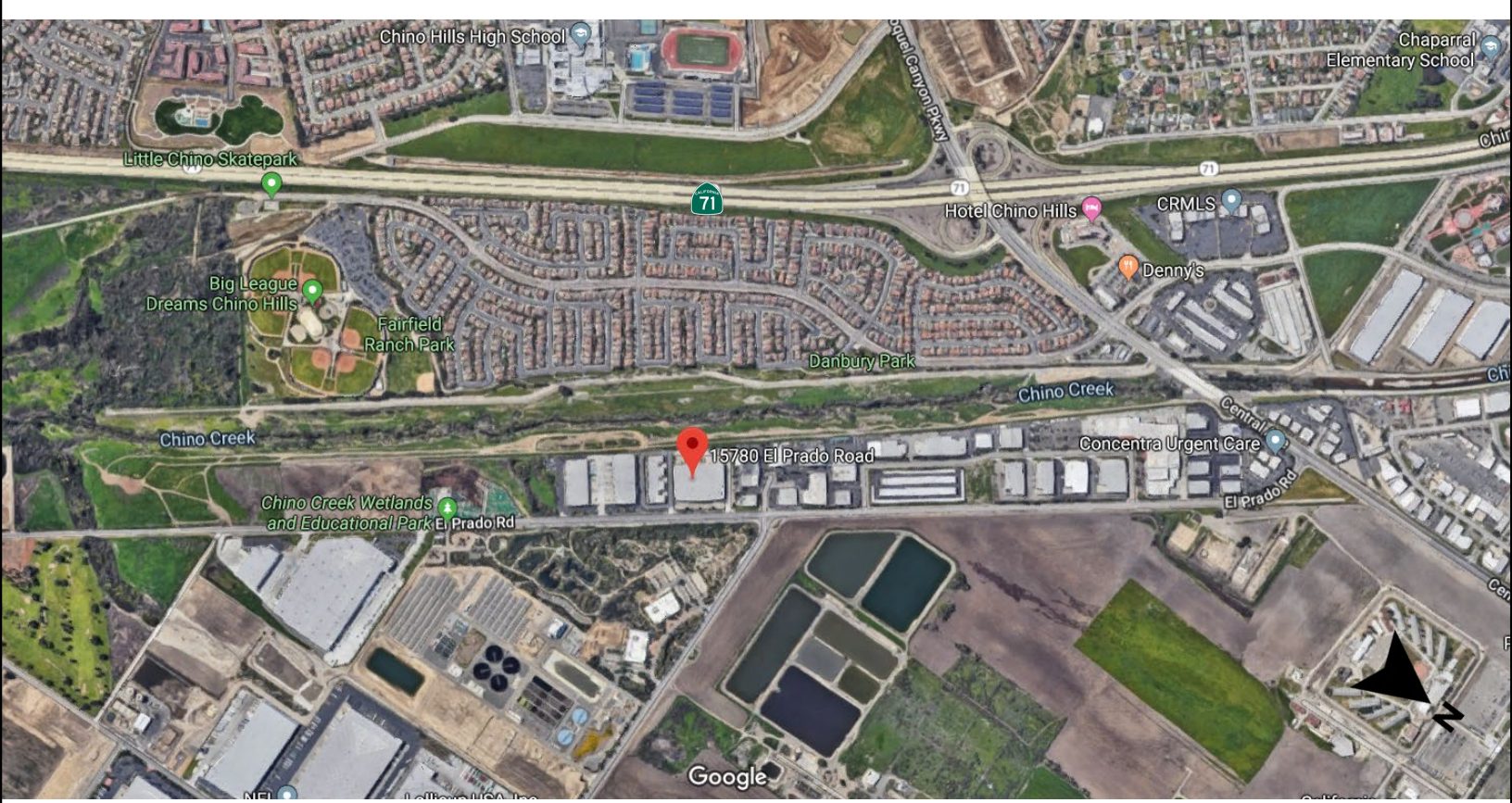
Greg Ashwill
greg@ashwill.com
Lic. 00943299
(909) 612-9898

Hayden Ashwill
hayden@ashwill.com
Lic. 02102967
(626) 363-7829

Sean Casey
seankc@ashwill.com
Lic. 01887121
(626) 363-7855

FOR SUBLEASE
±103,014 SF

15780 El Prado Road
Chino, CA



The information contained herein has been obtained from sources we deem reliable. While we have no reason to doubt its accuracy, we do not guarantee it. The prospective buyer or lessee should independently verify all information contained herein. All measurements are approximate.

Ashwill
Associates
COMMERCIAL REAL ESTATE

21660 E Copley Drive
Suite 195
Diamond Bar, CA 91765
www.ashwill.com

Greg Ashwill
greg@ashwill.com
Lic. 00943299
(909) 612-9898

Hayden Ashwill
hayden@ashwill.com
Lic. 02102967
(626) 363-7829

Sean Casey
seankc@ashwill.com
Lic. 01887121
(626) 363-7855